

# MANUAL & MECHANICAL VALVES



## Installation & Application Data

- 1) Before installing, be sure the valve hasn't been damaged in transit.
- 2) Use clean air filtered to  $40\mu\text{m}$ . Be aware of the flow direction & port size.
- 3) Please note whether the installation conditions meet the technical requirements (such as actuation frequency, working pressure & temperature) before installing the valve.
- 4) Notice the flow direction of air during installation, P is the air input, A (B) is the outlet port and R (S) is the exhaust port.
- 5) Avoid freezing temperature and vibration.
- 6) Before using fittings and tube make sure they are clean.

# MANUAL 3/2 WAY VALVES CKL SERIES

## Specification

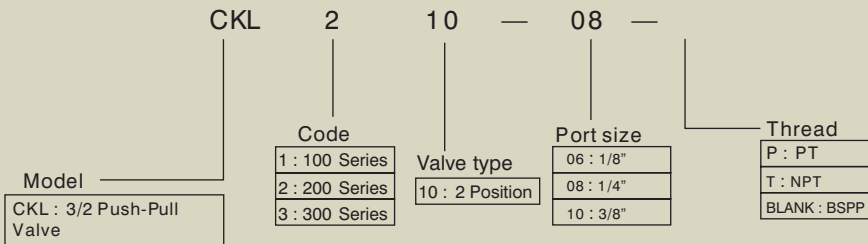
Model	CKL110-06	CKL210-08	CKL310-10
Fluid	Air (to be filtered by 40µm filter element)		
Operating	Manual control direct acting type		
Port ①	1/8"	1/4"	3/8"
Orifice	12.0mm <sup>2</sup> (Cv=0.67)	16.0mm <sup>2</sup> (Cv=0.89)	30.0mm <sup>2</sup> (Cv=1.67)
Valve Type	3/2		
Lubrication ②	Not required		
Pressure Range	0 - 0.8MPa (21 - 114psi)		
Proof Pressure	1.5 MPa (215psi)		
Temperature	-20 to +70°C		
Material of Body	Aluminum Alloy		

① PT thread, NPT thread and G thread are available;

② If add oil for lubrication, it is not allowed to stop midway. It is suggested to use ISO VG32 lubricant or the oil with the same grade.

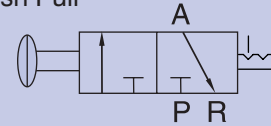


## Ordering Codes



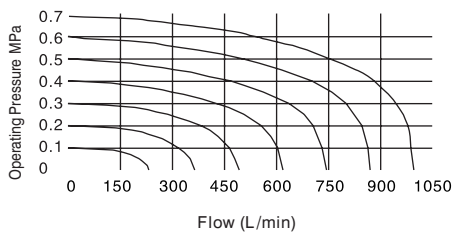
## Symbol

Push Pull

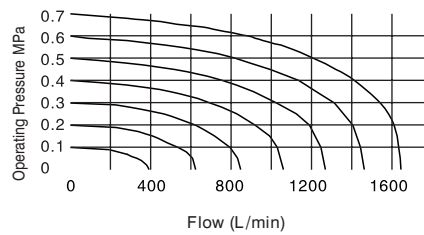


## Flow Charts

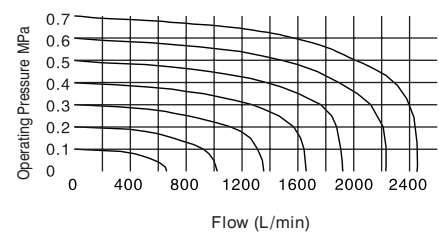
Model: CKL110-06



Model: CKL210-08

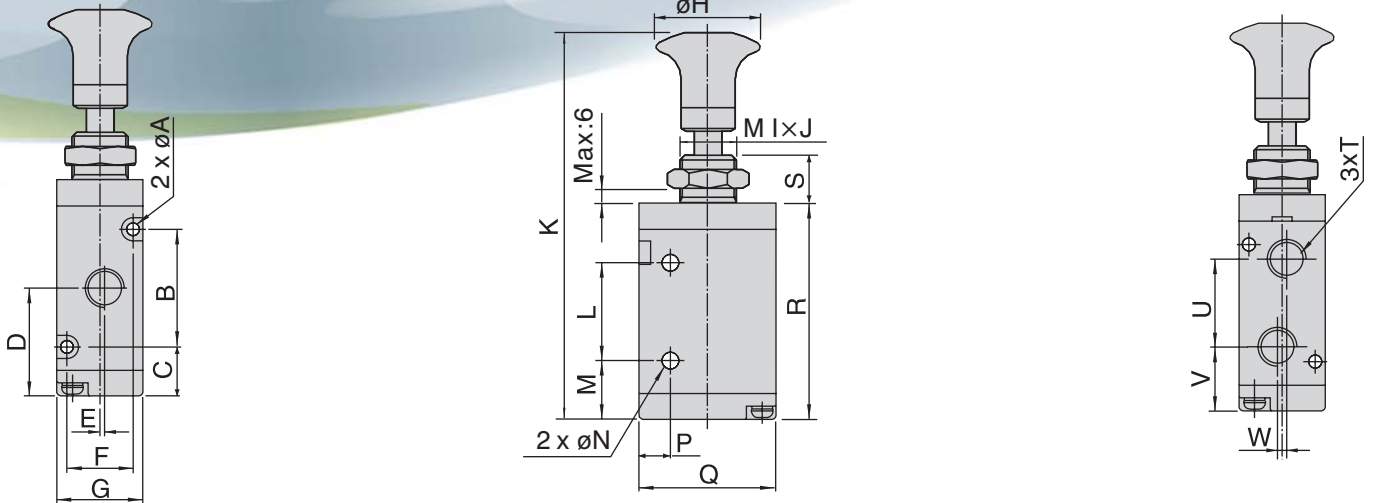


Model: CKL310-10



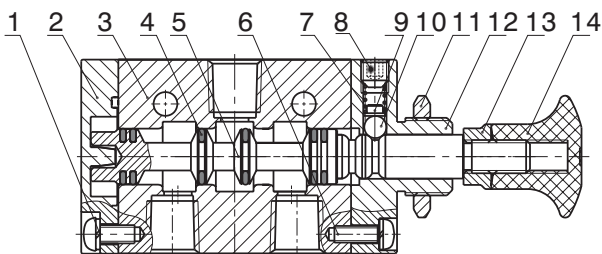
# MANUAL 3/2 WAY VALVES CKL SERIES

## Dimensions



Model	CKL110	CKL210	CKL310	Model	CKL110	CKL210	CKL310
	06	08	10		06	08	10
A	3.3	3.3	4.3	L	21	25	30
B	19	30	35	M	12.2	15.2	17.5
C	13.2	12.7	15	N	3.3	4.3	4.3
D	23.7	27.7	32.5	P	7.5	8	10
E	1	1.5	2	Q	27	35	40
F	13	17	20	R	47	57	65.8
G	18	22	27	S	10	10	10
H	22	22	25	T	1/8"	1/4"	3/8"
I	12	14	16	U	16	22.5	24
J	1.0	1.0	1.0	V	14.7	16.5	20.5
K	79	90	100	W	2	0	0

## Inner Structure



No.	Item	No.	Item	No.	Item	No.	Item
1	Round Head Screw	5	Spool	9	Spring Base	13	Safety Nut
2	End Cover	6	Round Head Screw	10	Steel Ball	14	Knob
3	Body	7	Spring	11	Hexagon Nut		
4	O-ring	8	Stop Screw	12	End Cover		